

LiScan 100

Multi-scene SLAM LiDAR

270°x360°

Laser Scanning FOV

120m

Maximum Range

1cm

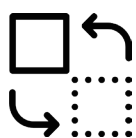
Relative Accuracy

72mpx

Camera Resolution



Boasted of unique algorithm on 3D laser scanning, LiScan 100 is a flexible and reliable solution to acquire accurate point cloud data.



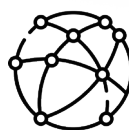
Easy Shift

Shift between backpack and handheld mode fast and easily.



Real Time Point Cloud

Dense point cloud shows on Android device at real time with immersive true color.



Geo-referencing

Integrated GNSS module to connect with reference station to get geo-referencing coordinates.

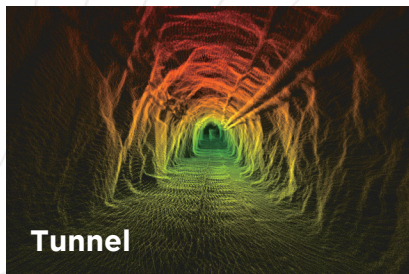


Long Duration

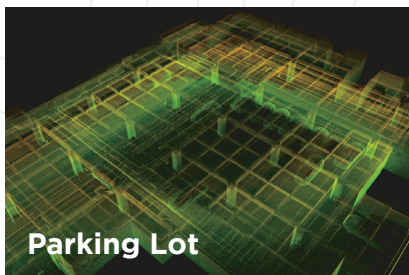
Separate battery design. 2 removable batteries. 5h working time.



OUTPUT



Tunnel



Parking Lot



Road & Forest

SPECIFICATIONS

SCANNER

Max.Measure Range	120m
Laser Class	Class I
FOV	270° * 360°
Wavelength	905nm
Point Measure Rate	320,000/640,000 points per second
Relative Accuracy	1cm
Absolute Accuracy	5cm

CAMERA

FOV	Panoramic Camera
Resolution	72 mpx

GENERAL

Weight	1.7kg (handheld combo) 0.9kg (battery pack) 5.1kg (backpack combo with battery)
Operating Temperature	-10 °C to +50 °C
Storage Temperature	-20 °C to +60 °C
Power Consumption	20W
Power Supply	10V to 16.8V DC
Battery Duration	2.5h for single battery
Data Storage	USB flash disk up to 64GB, alternative
Compatible Platform	Handheld / Backpack